

MANUKAU SYMPHONY ORCHESTRA

*season 2020*



MANUKAU SYMPHONY  
orchestra  
*'...a very special spirit'*

# MSO SEASON 2020

## HOUSTOUN PLAYS 'THE EGYPTIAN'

Saturday 21 March 2020

## BEETHOVEN PASTORAL

Saturday 23 May 2020

## OPERA NIGHT

Saturday 22 August 2020

## SEASCAPES

Saturday 14 November 2020

## SYMPHONIC JOURNEY

with the Howick School of Music

Sunday 27 September 2020

 Vodafone  
Events Centre

770 Great South Road,  
Manukau 2104

  
MANUKAU SYMPHONY  
orchestra  
'...a very special spirit'

## WELCOME TO 2020 WITH THE MANUKAU SYMPHONY ORCHESTRA

Welcome to 2020 with the MSO. Come, join us at the Vodafone Events Centre in Manukau for live performances of classical music.

Celebrate the 250th Anniversary of the birth of Beethoven with his beautiful *Pastoral Symphony* and enjoy his *Overtures* in each of our concerts throughout the year.

But first, celebrate with us in March for Michael Houston's salute to Manukau in Saint-Saens' *Egyptian Piano Concerto*. Michael has journeyed to Manukau many times during his remarkable career and we are privileged that he honours us for this one final occasion before he retires.

Be thrilled by the music of Mozart, Beethoven, Brahms, Tchaikovsky, Arthur Bliss and that of our own Auckland composer, Chris Artley. It is with great pride that we premiere his new work *Of Land and Sea* for Soprano Voice, Choir and Orchestra - written especially for the MSO - with poems by Aucklander Robina Adamson.

We are delighted to announce our new partnership with New Zealand Opera and share in the talent of their Dame Malvina Major Foundation Studio Artists in August, enjoying a selection of operatic arias and duets.

The Manukau Symphony Orchestra appreciates greatly your continued support. We would not be able to provide Auckland with such an incredible cultural resource without generous support from you: our audience, our players, and our benefactors.

The Manukau Symphony Orchestra is firmly established, having presented classical music concerts to the people of Manukau for over 26 years. MSO has been 'in residence' at the Vodafone Events Centre since the venue's opening in 2005 – some 15 years.

I applaud the dedication of its director and volunteers who work enthusiastically to make sure that our wonderful orchestra remains firmly anchored in our Pacific South.

I highly recommend you all to continue supporting the artistic and financial endeavours of this amazing group of musicians.



**TERRY SPRAGG**  
Manukau Symphony  
Chairperson



**UWE GRODD**  
Manukau Symphony  
Music Director



**SIR NOEL  
ROBINSON KMZM**  
Chairman  
Second Nature  
Charitable Trust

# HOUSTOUN PLAYS the egyptian



## HOUSTOUN Plays The Egyptian

Saturday 21 March 7.30pm

**BEETHOVEN**  
**MOZART**  
**OFFENBACH**  
**SAINT-SAËNS**

*Name Day Celebration Overture*  
*Symphony in G minor*  
*La Vie Parisienne Overture*  
*The Egyptian Piano Concerto*

We commence the year with our first Beethoven *Overture* – his *Name Day Celebration* – this being a ‘Happy Birthday’ song. How fitting that we play this for such a special birthday celebration – Beethoven’s 250th.

Then, Mozart’s wonderful *G minor Symphony*. This emotional work, so full of melodic writing of surpassing beauty, rightly deserves to be called the ‘crown’ of Mozart’s symphonies.

Offenbach’s overture to *La Vie Parisienne* celebrates all things Parisian. Let’s dance to the gaiety and *joie de vivre* of this fun work.

Finally, welcome New Zealand’s one and only Michael Houstoun to perform Saint-Saëns’ remarkable *Egyptian Piano Concerto!* Michael has said that this is one of his favourite concertos. How wonderful that he has chosen to perform this one final time at Manukau!

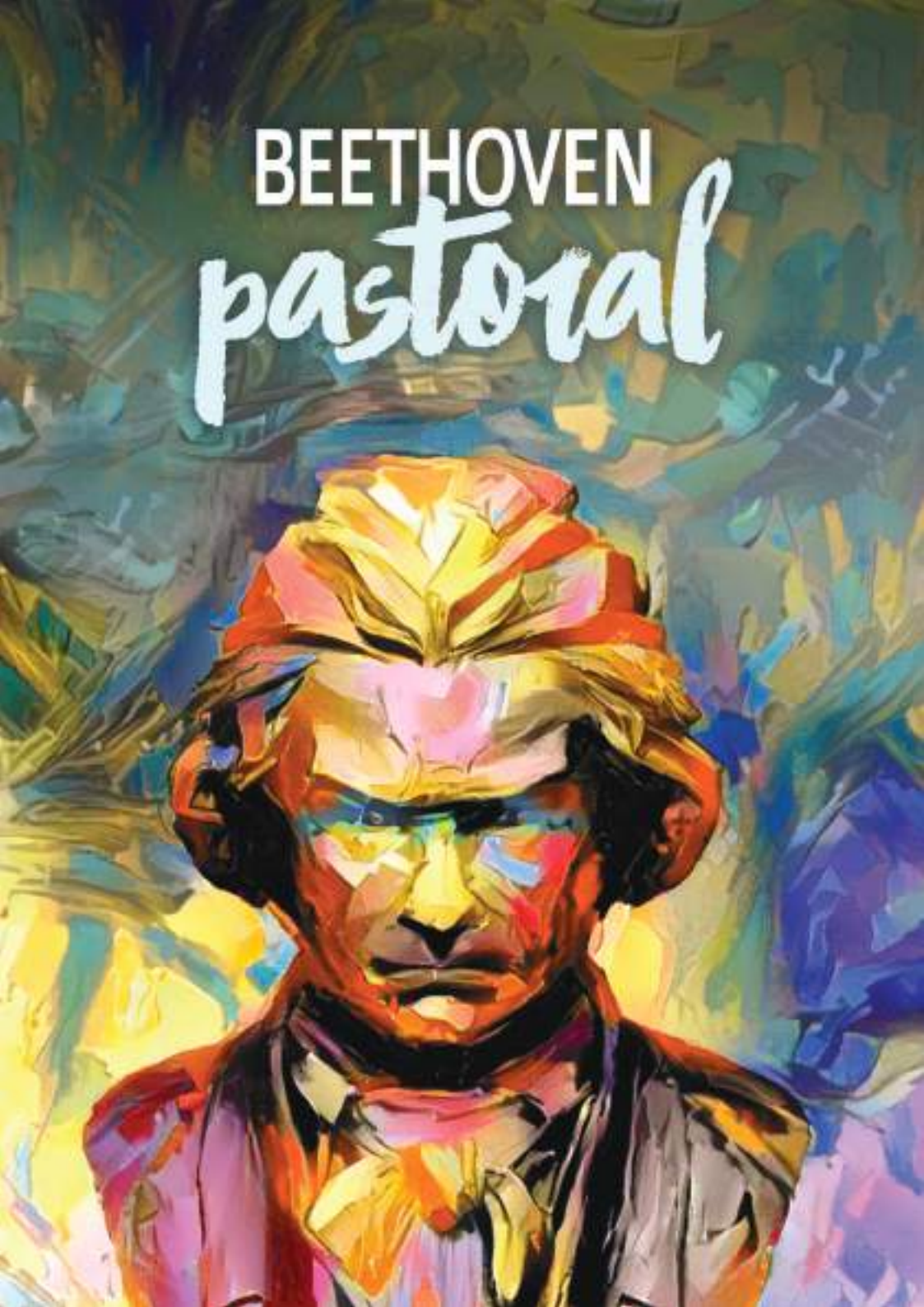
A keen traveller, Saint-Saëns wrote this dazzling concerto while in Luxor, the sunny Egyptian city of famous temples. It is an exotic work with Javanese, Spanish and Middle-Eastern influences – a musical “sea voyage” in Saint-Saëns’ words.



**UWE GRODD**  
Conductor



**MICHAEL HOUSTOUN**  
Piano



# BEETHOVEN PASTORAL

THE  
PETTMAN NATIONAL  
JUNIOR ACADEMY  
of Music

Saturday 23 May 7.30pm



L-R: Pettman Ensemble: Curt Thompson (Violin), Edith Salzmann (Cello), Michael Endres (Piano) and Uwe Grodd (Conductor)

<b>BEETHOVEN</b>	<i>Triumphal March from Tarpeja</i>
<b>BEETHOVEN</b>	<i>Triple Concerto</i>
<b>BEETHOVEN</b>	<i>Pastoral Symphony</i>

This concert brings us three inspirational works from Beethoven himself.

First comes the *Triumphal March from Tarpeja*. The daughter of Tarpeo, Tarpeja became the divine guardian of the Capitoline Hill in Rome. Today, the Rock of Tarpeja bears her name.

Beethoven completed his *Triple Concerto* for violin, cello, piano and orchestra in 1806. His only concerto to feature more than one instrument, it was a new venture for Beethoven, combining the elements of a grand concerto with a group of soloists more usual in chamber music. We welcome the Pettman Ensemble for this special celebration of Beethoven's genius.

The star of this concert is surely Beethoven's *Pastoral Symphony*. "We walk through sunlight, beside murmuring streams and with small creatures and birds that sing. We reach a gathering of country folk and a sudden storm. This is followed by Beethoven's 'Shepherds song'. A divine symphony of Pan!"

# Opera NIGHT



## OPERA NIGHT

Saturday 22 August 7.30pm

<b>BEETHOVEN</b>	<i>Fidelio Overture</i>
<b>ARIAS</b>	<i>Mozart, Léhar, Leoncavallo, Lalo, Puccini, Verdi, Bernstein</i>
<b>TCHAIKOVSKY</b>	<i>Variations on a Rococo Theme</i>
<b>VERDI</b>	<i>La Forza del Destino Overture</i>
<b>PIAZZOLA</b>	<i>Oblivion</i>

We welcome back our popular guest conductor, Ray Chan, who will introduce us to Dominic Lee, cellist from New York. With the assistance of a scholarship from the Pettman Academy of Music, Dominic competed at the Valsesia International Music Competition in Italy where he won 1st prize at the age of 15. He will perform the popular Tchaikovsky *Variations on a Rococo Theme* and the beautiful cello solo *Oblivion* by Piazzola.

Be charmed by New Zealand Opera's Dame Malvina Major Foundation Studio Artists, Anna Simmons, soprano, Felicity Tompkins, soprano, and Harry Grigg, tenor, as they present an evening of favourite operatic arias and duos.

Enjoy well-known arias from Mozart's *Marriage of Figaro*, sway to the delightful *Lippen schweigen Waltz* from Léhar's *Merry Widow*, weep at Puccini's *O mio babbino caro* from *Gianni Schicchi*, and feel the tug on your heartstrings at the singing of *One Hand, One Heart* and *Maria* from Bernstein's *West Side Story*.

Add to this the magnificent Overture to *La Forza del Destino* by Verdi, and you will have experienced a most thrilling evening.

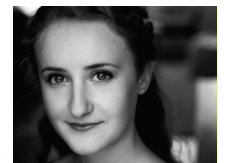
NZOPERA



**RAY CHAN**  
Conductor



**DOMINIC LEE**  
Cello



**ANNA SIMMONS**  
Soprano



**FELICITY TOMPKINS**  
Soprano



**HARRY GRIGG**  
Tenor

# seascapes

## SEASCAPES

Saturday 14 November 7.30pm

<b>BLISS</b>	<i>Concerto for Cello and Orchestra</i>
<b>BEETHOVEN</b>	<i>Calm Sea and Prosperous Voyage</i>
<b>BRAHMS</b>	<i>Schicksalslied Song of Destiny</i>
<b>CHRIS ARTLEY</b>	<i>Of Land and Sea</i>

Sir Arthur Bliss wrote of his *Cello Concerto*; 'I sketched out the music in the spring of 1969, and, on his acceptance, I dedicated it "to Mstislav Rostropovich with admiration and gratitude". It is a light-hearted work and there are no problems for the listener – only for the soloist!'

We are thrilled to welcome back Andrew Joyce, Principal cellist of the NZSO, as soloist for the first performance of this colourful English concerto in Manukau.

Then it is Auckland Choral's turn to join the MSO for Beethoven's *Calm Sea and Prosperous Voyage* - based on two poems by Goethe, and Brahms' major choral work *Schicksalslied – Song of Destiny*. It has been said that 'had Brahms never written anything but this one work, it would alone have sufficed to rank him with the best masters'.

Our final music offering for the year is Chris Artley's *Of Land and Sea* – a major new work by this Auckland composer, renowned for his sumptuous choral writing. Scored for Soprano Solo, 4-part Choir and a full Symphony Orchestra, and commissioned by the Manukau Orchestral Society, the MSO is proud to present the premiere performance of this inspirational work based on poems by Aucklander Robina Adamson.



**UWE GRODD**  
Conductor



**ANDREW JOYCE**  
Cello



**GINA SANDERS**  
Soprano



## SYMPHONIC JOURNEY

Saturday and Sunday 26 & 27 September 2pm to 5pm

**TIMOTHY  
CARPENTER**  
Conductor

**Beethoven** *Overture to The Ruins of Athens*  
**Schubert** *Unfinished Symphony 1st movement*  
**Sibelius** *Finlandia*

A *Symphonic Journey* weekend workshop with the MSO and the Howick Youth Orchestra and students from the Howick School of Music will be held at Te Tuhi Centre for the Arts, 13 Reeves Road, Pakuranga.

An informal performance for family and friends will be presented at 4pm on Sunday 27 September.



## MANUKAU SYMPHONY ORCHESTRA

Manukau Symphony Orchestra (MSO) is a community orchestra based in South Auckland. The orchestra presents four varied concerts annually to patrons from across Auckland at the Vodafone Events Centre. Established in 1993 with active support from the Manukau City Council and the Manukau community, the MSO is 27 years of age this year. Professor Uwe Grodd has been the orchestra's Music Director since its foundation. Two orchestras - the Howick Orchestra and the Howick-Pakuranga Youth Orchestra - were forerunners to the Manukau Symphony Orchestra.

The orchestra, in addition to performances at the Vodafone Events Centre, supports NZ soloists, brings international soloists to the community of South Auckland, offers scholarships to talented youth players and provides opportunity for professional players to mentor youth and community musicians. It also frequently commissions new works from NZ composers, proudly premiering them right in the heart of Manukau.

## MANUKAU ORCHESTRAL SOCIETY

Patrons	Sir Noel KNZM and Lady Robinson
Chairperson	Terry Spragg MNZM (Life Member)
Secretary	Cheryl Le Fevre
Treasurer	Vanessa Tam
Music Director	Uwe Grodd
Committee	Jennifer Hsu, Joy Liu, Michael You
Hon. Ambassadors	Ellen Skinner, Peter Wedde, Ella & Jim Donald
Co-ordinator & Ticketing	Terry Spragg MNZM (Life Member)
Administrator	Anne Esterman
Marketing	Jennifer Hsu
Orchestra & Stage	Russell Finnemore
Librarians	Jennifer Hsu & Sarah Thompson

## SUBSCRIBE TODAY

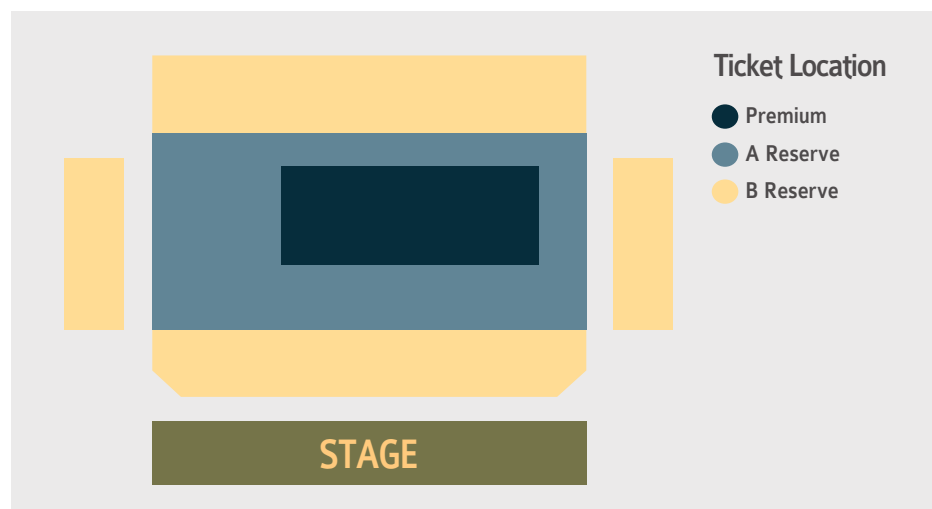
Subscribe to more than one concert and pre-pay your parking and supper and save!

Reserve Area	Number of Concerts			
	4	3	2	1
Premium Adult	\$61	\$65	\$68	\$73
Premium Senior	\$58	\$59	\$61	\$63
Reserve A Adult	\$47	\$50	\$52	\$55
Reserve A Senior	\$42	\$44	\$46	\$49
Reserve B Adult	\$37	\$39	\$41	\$43
Reserve B Senior	\$32	\$34	\$36	\$37
Student	\$18	\$18	\$18	\$18
Supper (Pre-paid) <i>A supper voucher will be issued</i>	\$ 8	\$ 8	\$ 8	\$ 8
Parking	\$ 6	\$ 6	\$ 6	\$ 6

*Supper (Cash on the night) \$ 10*

## SEATING PLAN

BNZ Theatre Seating Plan



## HOW TO BOOK

### Post

Post booking form with cheque or credit card details to Manukau Symphony Orchestra PO Box 38-233, Howick, Auckland 2145, or

### Phone

Phone MSO on (09) 577 3031, or

### Email

Email orders to [admin@manukausymphony.org.nz](mailto:admin@manukausymphony.org.nz).

### Online

Visit Eventfinda at [www.eventfinda.co.nz](http://www.eventfinda.co.nz) and search "Manukau Symphony Orchestra."

### DOOR SALES

Vodafone Events Centre 770 Great South Road, Manukau  
Door Sales on performance night 2 hours prior to start.

*Manukau Symphony Orchestra reserves the right to alter any advertised schedule of artists and programmes.*

## PARKING

Parking at Vodafone Events Centre costs \$6 for subscribers. Vouchers can be pre-paid using the booking form.

# Play a Part IN MSO'S FUTURE

Since 1993, the Manukau Symphony Orchestra (MSO) has delighted audiences, and provided a platform for musicians from across the Auckland region, as 'Manukau's Orchestra'.

It is the only symphony orchestra of its calibre in South Auckland, delivering high quality orchestral music to the diverse communities in the Manukau region. Its unique mix of professional, community and youth musicians is what makes its 'very special spirit'.

Like many other volunteer-based community organisations, the MSO relies on the support of its audiences, players, and funders to deliver an exciting and accessible concert series each year.

So please help us continue to do so by deepening your connection with our Orchestra and become a Chair Donor.



Jenni Khan, Ann Morris and Dr Tom Morris

"IT HAS BEEN A PLEASURE SUPPORTING OUR LOCAL ORCHESTRA OVER THE YEARS. WE LOVE THAT OUR CONTRIBUTION HELPS ENSURE THE ORCHESTRA'S FUTURE AND OUR ENJOYMENT FOR YEARS TO COME."

- DR. TOM MORRIS

## Become a Chair Donor

As a MSO Chair Donor, you will be supporting the Orchestra and recognising the skills and contribution of your selected Chair Player. Enjoy the opportunity to meet your Chair Player throughout each year.

All Chair Donors will be acknowledged in our concert programmes and on our website. Donate your gift as a lump sum, or as pledged payments throughout the year. All donations over \$5 are tax deductible.

For more information on becoming a Chair Donor, please contact Terry Spragg on 09 577 3031 or [admin@manukausymphony.org.nz](mailto:admin@manukausymphony.org.nz)

## SUBSCRIPTION FORM

Select your concerts, tickets, supper and parking  
Support the MSO with your donation



Title	Reserve Area			No. of Tickets			Tickets	Supper \$8	Parking \$6
	Prem	A	B	Adult	Senior	Stud			
HOUSTON PLAYS THE EGYPTIAN							\$	\$	\$
BEETHOVEN PASTORAL							\$	\$	\$
OPERA NIGHTS							\$	\$	\$
SEASCAPES							\$	\$	\$
<b>SUBTOTAL</b>							\$	\$	\$
<b>DONATION</b>							\$		
<b>TOTAL</b>							\$		



## SUBSCRIBER INFORMATION

First Name \_\_\_\_\_

Last Name \_\_\_\_\_

Address \_\_\_\_\_

Suburb \_\_\_\_\_

City \_\_\_\_\_ Postcode \_\_\_\_\_

Phone \_\_\_\_\_

Mobile \_\_\_\_\_

Email \_\_\_\_\_

## PAYMENT

Cheque enclosed and payable to Manukau Orchestral Society

VISA  Mastercard

Card No.

\_\_\_\_\_/\_\_\_\_\_/\_\_\_\_\_/\_\_\_\_\_

Expiry Date \_\_\_\_/\_\_\_\_

Name on Card \_\_\_\_\_

Signature \_\_\_\_\_

Would you like to receive information about bus trips from Howick or Pakuranga for the concerts at the Vodafone Events Centre.

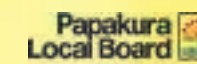
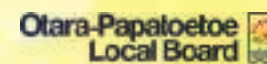
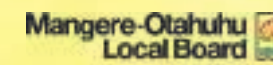
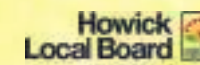
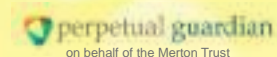
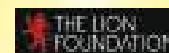
Would you like to receive the newsletter by post  
OR

Would you like to receive the newsletter by email



# Bravo!

## THANK YOU TO OUR SPONSORS



SIR NOEL KNZM AND LADY ROBINSON      PHIL AND HELEN GREENBANK

DR TOM AND MRS ANN MORRIS      MRS TERRY SPRAGG MNZM





MANUKAU SYMPHONY  
orchestra  
'...a very special spirit'

[www.manukausymphony.org.nz](http://www.manukausymphony.org.nz)  
[www.facebook.com/manukausymphonyorchestra](https://www.facebook.com/manukausymphonyorchestra)